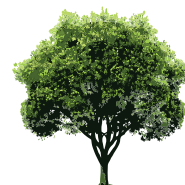


Bespoke home-improvement solutions that are certain to enhance your home



www.reddish-joinery.co.uk



REDDISH JOINERY

...it's where your beautiful new lifestyle begins
The Family Business - Est. 1967

Contents

Accoya™ Timber	4
Timber Windows	6
Flush Casement Windows	6
Storm proof casement	7
Tilt & Slide Sash Windows	7
uPVC Tilt & Slide Sash Windows	8
uPVC Casement Windows	9
uPVC Flush Casement Windows	9
Timber Entrance Doors	10
Timber & Aluminium Bifold Doors	13
Timber French Doors & Aluminium Sliding Patios	14
Safeguard Doors & Composite Doors	16
Leaded Light Design	17
Timber, Aluminium & uPVC Orangeries	18
Glazed Extensions	20
Window & Door Hardware	22
Environment	23





Why Choose Reddish Joinery?

Reddish Joinery was established in 1967, we started the business in a small garage in North Reddish, Stockport and produced made-to-measure timber windows for domestic customers.

The Reddish Joinery team consists of 24 members of staff, all of whom care about the company and its customers. Our current factory, also based in Stockport, is fitted with a selection of high-tech machinery, allowing us to create bespoke products to a level of quality that other companies struggle to match. And because we manufacture most of the products ourselves, product quality is consistently excellent across our whole range.

Maintaining a high standard of customer service is an integral part of our ethos. Therefore, we aim to provide a personalised service to all of our customers, taking into account their needs at every stage of the project, from the initial enquiry to the project end. We're happy to answer any queries from our customers, no matter how big or small, and aim to keep our patrons well-informed throughout their dealings with us.

Visit one of our showrooms

Sale Showroom
Douglas House,
193 Cross Street
Sale, Cheshire
M33 7JH

Factory / Manufacturing Site
Unit 6 - 9. The Hollygate
Albert Street,
Stockport
SK3 0BD



Accoya™ Timber

A new world of sustainable and low maintenance windows and doors is available using Accoya wood.

Accoya is a type of modified timber. To create it, softwoods from sustainable forests are taken and modified via a process known as acetylation. The result is a timber that is now indigestible to insects, immune to fungal attack and able to last for almost a century. A completely non-toxic product, Accoya is also incredibly strong and a fantastic insulator, meaning it's the perfect material for home improvement products. We use it in the manufacture of windows, doors, conservatories & orangeries. Accoya is the only timber product to win the Cradle to Cradle Platinum award, highlighting its exceptional sustainability.

Accoya USP's

- Estimated lifespan of 80 years
- Swelling and shrinkage reduced by up to 75%
- Carbon neutral
- Lightweight but extremely strong
- 50 year warranty

Common Uses

Windows: Casement, Sash, Flush Sash

Doors: Entrance, Bifold, Patio, French



Accoya is the only timber product to win the Cradle to Cradle Platinum award, highlighting its exceptional sustainability.



WINDOWS



Timber Windows

The perfect blend of style & functionality, finely crafted by Reddish Joinery.

The high-performance benefits and stunning looks of exquisite timber ensure our timber windows are the perfect fit for your home. We spray them with 3 coats of micro-porous paints or stains in our purpose-built spray booth, for exceptional weather protection and to ensure they look as beautiful as the day they were fitted all year round. Additionally, our special end grain seals and joint seals ensure they'll last for years to come, all with the added bonus of being incredibly easy to maintain.

Flush Casement Windows

Fitted with modern draft seals and friction hinges, they offer excellent weather protection and ease of operation.

In contrast to standard casement windows, where the sashes stick out slightly from the frame, the sash on a flush casement sits flat with the framework. The result is a clean, attractive design that evokes a feeling of classical elegance. Able to blend in with any aesthetic, the combination of refined manufacturing techniques and wood material of the utmost quality, ensures for a build quality that is second to none. Enjoy all of timber's natural insulation qualities and a selection of supreme security hardware with total ease of maintenance.



Storm-proof Casement Windows

The most popular style of timber window, they come with a host of customisable features, achieving a level of versatility not found amongst other windows.

Double draft sealed as standard and fitted with espagnolette locks, our storm proof casements offer some of the highest levels of weather protection, noise insulation and security on the market. Available with a traditional sash horn to give the window a mock sash appearance, they boast of clean, slender sight lines and allow you to enjoy a brighter, warmer and better looking home.

Tilt & Slide Sash Windows

Featuring all the charm of a traditional sash window, we've updated their performance so they're perfect for the modern home.

To ensure for an authentic sash window appearance, we use a timber bevelled putty line bead, whilst Georgian bars and exterior sash horns are available as optional extras. The addition of concealed draft seals also means they'll keep the cold air out of your home. Their main feature, and one that we're particularly proud of, is their ability to tilt. This allows you to clean the windows from inside and ventilate your home without having the bottom part of the window open.



WINDOWS

uPVC Tilt & Sliding Sash Windows

Operated via a vertically sliding mechanism, we've brought this historic design into the modern age.

Featuring the same slim sight lines as the original timber sash windows, we fit them with the latest double glazing so insulation levels are considerably better. The result is the same visually appealing window that comes with the added bonuses of lowered heating costs and cosy, quiet interior spaces. Whilst the required maintenance for timber sash windows is far from excessive (they require retreating every 6-8 years), those made from uPVC will never require retreating, so might be better for those after as little upkeep as possible. The hard-wearing tilt and sliding mechanism on either option is built to last, ensuring you can enjoy years of smooth, vertical operation. Devilishly handsome and incredibly practical, they'll significantly enhance any property.

Product Features

- A' Rated as standard
- Inward opening tilt facility to allow easy and safe cleaning of the external glazing
- 10 different colour options
- Slim profile sections giving a better appearance
- Trickle vent and travel restrictor option



uPVC Casement Windows

An understated yet incredibly versatile window design, there's a uPVC casement window for every homeowner.

The basic principle of a casement window is simple. To be classified as such, the sole requirement is that the window must open outwards. The style, colour, glass and furniture are then up to you. After adapting their look to your liking, you can expect to benefit from a stylish window with a finish that's built to last. Constructed from market-leading profiles, their energy efficient frames are fitted with multiple heat-trapping chambers, keeping interior areas warm and energy bills low. All with the added bonus of virtually no maintenance.

Product Features

- Multi-chambered profiles for an excellent thermal performance
- Variety of decorative glass options
- Maintain with only the odd wipe down
- Available with wood grain textured finishes
- Made-to-measure window sizes
- Fitted with the latest security hardware



uPVC Flush Casement Windows

Classic styling with all the performance benefits of modern uPVC.

Although we specialise in the production of timber products, we understand that beauty is in the eye of the beholder and that some people prefer the look of uPVC to timber. For this reason, we also offer flush casement windows constructed from uPVC. With these windows, you can enjoy the low maintenance qualities, superb durability and exceptional thermal performance that you would with our other uPVC windows but with the added visual appeal of a window sash that is flush with the frame of the window.

DOORS

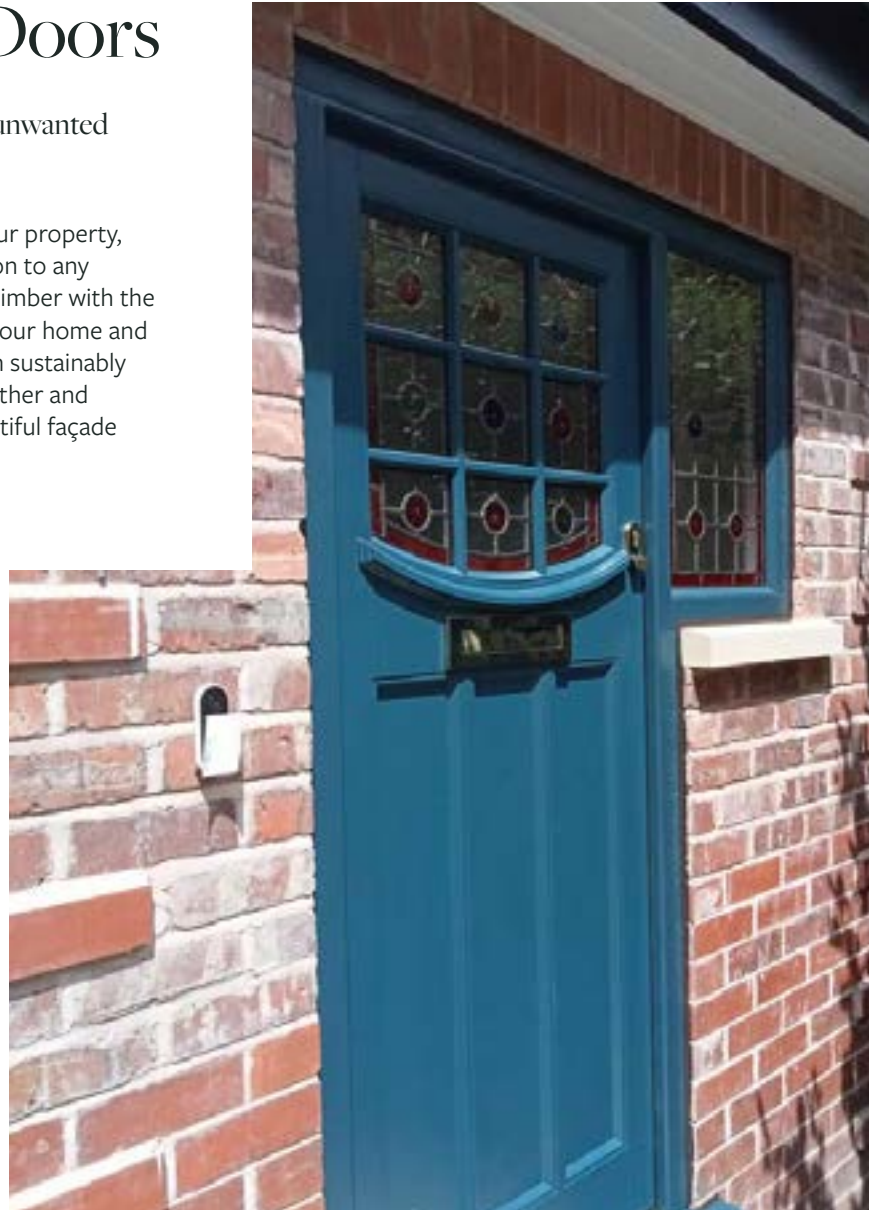
Timber Entrance Doors

Stylishly enter your home whilst ensuring any unwanted guests will be completely unable to do so.

Tailor-made to the size and style requirements of your property, our timber entrance doors make a wonderful addition to any home. Combining the natural insulation qualities of timber with the latest energy efficient glass, they'll keep the heat in your home and the cold out. Constructed from timber that has been sustainably sourced, they offer exceptional resilience to the weather and damage caused by everyday use. The result is a beautiful façade that will continue to look good for years.

Product Features

- Advanced locks for high-security
- Variety of decorative glass options
- Energy efficient design
- Built to last with only minimal upkeep
- Can be finished in a variety of colours
- Various locking options



With a range of attractive door furniture available too, you can adjust the subtle nuances that will truly make the door feel your own.



DOORS

DOORS



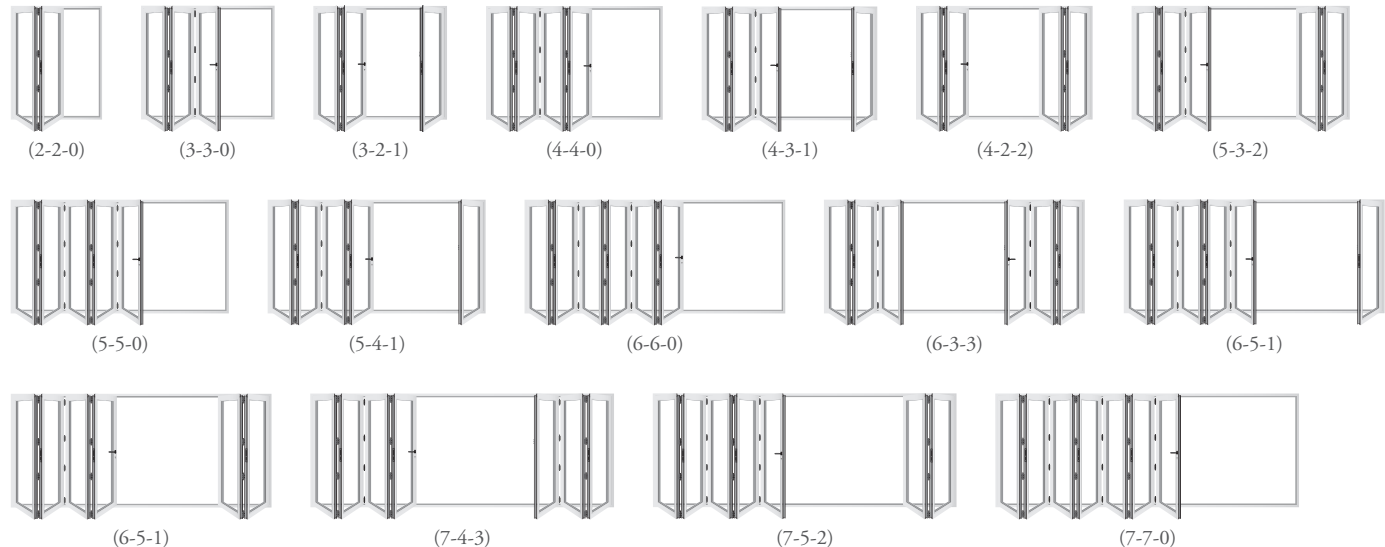
Timber & Aluminium Bifold Doors

Practical, high-performing doors that epitomise sleek, contemporary living.

Bifold doors are a modern solution for transforming the look and feel of a property. Huge areas of glazing combine with slim frames to create well-lit, spacious looking environments, that come with the added bonus of panoramic exterior views. Available in either timber or aluminium, whatever material you prefer, exceptional durability and a strong thermal performance are certainties. Folded in a concertina style to one side via a sliding opening mechanism, you can easily transition between different areas of your property.

Product Features

- Choice of aluminium or timber framing
- Fitted with multi-point locks an internally glazed for security
- Low-e glass and argon filled sealed units to boost thermal efficiency
- Available in a wide selection of colours
- Can be maintained with relative ease
- Multi-point locking



DOORS

Timber French Doors & Aluminium Sliding Patios

A design firmly rooted in tradition with a performance that has been continually updated over centuries.

French doors are instantly recognisable. Their dual panel door design has featured in homes across the globe for years. With a wide opening capacity that allows you to flood your home with light and air, you're able to smoothly move from the inside of your home to your garden. Their energy efficient design ensures your property's interior will remain nice and warm, whilst multi-point locks keep your home highly protected from intruders. Featuring slender frames and an abundance of glass, they are available in a variety of styles and will transform the visual appeal of your home for the better.

Product Features

- Choose for them to open inwards or outwards
- Variety of decorative glass options
- Energy efficient design
- Built to last with only minimal upkeep
- Can be finished in a variety of colours





DOORS

Safeguard Doors & Composite Doors

Our premium brand of composite door, these are the ideal solution for those seeking the ultimate entrance door.

Their core is built from ultra-dense polyurethane foam, which dramatically enhances the door's insulation qualities. Not only will your home be delightfully warm, but the door's core reduces outside noise by up to 31 decibels, keeping the inside of your home peaceful and pleasant. The combination of an advanced multi-point locking system with Ultion anti-snap lock cylinders ensures the door is virtually impervious to any break-in attempts. In regards to their looks, the woodgrain textured Glass Reinforced Plastic skin emulates the look of real timber, for an absolutely gorgeous appearance.

Product Features

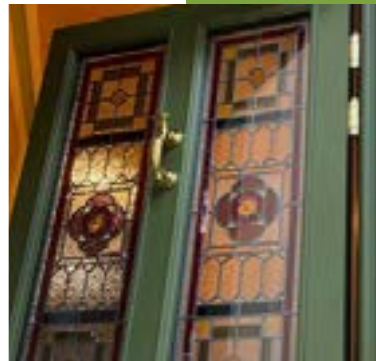
- A' Energy Rated
- Triple glazing glass in various designs
- Numerous styles & colour options
- Low maintenance exterior can be easily wiped clean
- Built from a variety of ultra-durable



Long-lasting weather protection

The door's core is coated with polymer composite rails that prevent water absorption, so the weather is unable to make its way into your home.





Leaded Light Design

The beauty of stained glass combined with the lengthy experience of Reddish Joinery.

Leaded lights are a form of stained glass window. Their designs are renowned for simplistic beauty which can enhance the character of classic properties and those in conservation areas extremely well. Because of their lovely styling, a leaded light or two can provide any home with a gorgeous focal point.

Product Features:

- Suitable for any window, including casements, flush sash and shaped windows
- Can be used to reduce light intake
- Compatible with clear and obscured glass
- Beautifully bold lines and vibrant colours for incredible visual appeal
- Choice from almost any colour and design, including geometric patterns, your favourite animal, etc.

ORANGERIES

Timber, Aluminium & uPVC Orangeries

An elegant solution for increasing your living space and how you interact with your home.

Like conservatories, orangeries are a fantastic way to improve your living space. Orangeries, however, are considered the more deluxe option. Easily identified by their stylish brickwork and lavish lantern roofs, Reddish fits them with the latest double glazing, so they'll easily keep a comfortable temperature all year round. We also use the latest locking hardware, so it won't pose any security risks.

They can be used in the same way as another room of the house, regardless of whether you're after another room to eat, relax or study in. Because we manufacture as well as install them, we take care of everything from the ground works to the electrics, even incorporating spotlights and speakers into the interior ceiling if desired.

Expertly tailored to your requirements, we'll ensure you receive your ideal addition to your home.



Services that we provide as part of the process:

- Discussing the plans in your home
- Providing a detailed quotation with CAD design
- Dealing with all ground works and building works
- Electrical and plumbing installation, plastering
- Site survey as standard

Extensions that need building regs or planning:

- Building regs and structural drawings
- Drawings for planning permission and arranging planning submissions
- Arranging building inspectors
- Steel beam installation
- We also deal with piling contractors should the extension be built on unsuitable ground



Expertly tailored

Featuring a striking design that will instantly grab the attention of you and your guests, an orangerie can give your home that unique feature it so desperately craves.

The interior edges of the lantern roof come beautifully plastered for that homely feel, although spotlights and speakers can be integrated into them if desired. Which windows and doors are used is also up to you, although the whole range is fitted with the latest locking hardware so a new orangerie will not pose any security risks. To reduce the time you spend maintaining their appearance, the roofing system has also been fitted with self-cleaning glass

HUP!

Glazed Extensions

Are you dreaming of a bright sociable open plan room that links your living space with your garden?

A building revolution, Hup! Uses highly energy efficient Ultrapanel in place of traditional brick walls and timber and slate roofs.

Proudly British, Hup! Extensions can be used to transform conservatories and Orangeries, stress Free building and faster than a traditional brick extension.

Patented Ultrapanel technology combines the best of both timber and steel framing building technology with exceptional insulation properties.



uPVC Orangery Features

- Can be finished in a range of colours
- Natural insulating uPVC profiles for enhanced thermal performance
- uPVC frames can be wiped clean, so upkeep is minimal
- Comes with your choice of high-quality uPVC windows & doors

Timber Orangery Features

- Built with Accoya frames for exceptional durability and very low maintenance
- Carbon Neutral product
- Energy efficient for heat retention
- Almost unlimited colour options inside and outside
- Available with Accoya windows & doors

Aluminium Features

- Ultra slim sight lines
- Low u values
- Huge range of RAL colours
- Aesthetically stunning
- Contemporary designs

With U-Values of between 0.12 and 0.17 that significantly exceed building regulation requirements, These ground breaking panels make Hup! Extensions five times more energy efficient than the average UK home so that with plenty of glass, your Hup! Will be every bit as warm as the rest of your home.

Super strong I-Beam Structure - Hup! Wall panels significantly outperform traditional building methods in terms of strength. This is thanks to the collective force of the panels which click together to form a super-strong i-beam structure throughout your Hup!

Wall finishes are traditional brick slip finish or a contemporary render or even timber.



HARDWARE

Window & Door Hardware

An extensive selection that caters to the individuality of each and every homeowner.

In order to really make something feel your own, it's important you're able to take as much control of the design as possible. A big part of overseeing the design of a product is being able to choose which furniture is fitted upon it. This can alter the look and feel of a product dramatically.

LETTERPLATES



WINDOW HANDLES



MONKEY TAIL & TEAR DROP HANDLES



DOOR HANDLES



SASH LOCKS



DOOR ACCESSORIES



Environment

Here at Reddish, we are devoted to reducing our carbon footprint wherever we can.

With the Earth's rising population and the increase in consumption that comes with it, so much of the Earth's natural resources have already been depleted. If we continue with the philosophy of using more than we require, soon there will be nothing left. Therefore, Reddish Joinery advocate the use of sustainable materials wherever we can. A big part of our commitment is the use of Accoya wood, which is a long-lasting, natural timber that is non-toxic and 100% recyclable.

Undoubtedly committed to sustainability

Reducing our carbon footprint is an essential component of our Corporate Social Responsibility and something we take very seriously.



“

After meeting Lee and Caroline we decided to use Reddish Joinery to replace all of our windows and doors in our Edwardian property. They were professional and very nice people, who made us feel very comfortable and confident in their work. Reddish did everything they said they would do, their attitude and work ethic is exemplary and we would recommend them to anyone.

Richard and Alex Caplan | Hale



Very professional & fantastic workmanship, everything happened as it should. So everything went very smoothly from having the quote all the way through the process.

Mr R (Bifolds & windows) | Wilmslow

“

For a first-hand look at results we have delivered, visit our website and watch our customer testimonial video: www.reddish-joinery.co.uk

T: 0161 969 7474

E: sales@reddishjoinery.com

W: www.reddish-joinery.co.uk

Sale Showroom

Douglas House,
193 Cross Street
Sale, Cheshire
M33 7JH

Factory / Manufacturing Site

Unit 6 - 9, The Hollygate
Albert Street,
Stockport
SK3 0BD